

# Step by Step Instructions for Using the Local Data Tool

To generate a local report, select an indicator by title at one of the links below.



[Home](#)

[About Us »](#)

[Our Work »](#)

[Resources »](#)

[Get Involved »](#)

[Contact Us](#)



## Family Violence Indicator Local Data Tool

Using the Family Violence Indicator Local Data Tool, you can build custom, downloadable reports for indicators of family violence, including:

- Line graphs showing trend data for selected localities;
- Custom data tables sorted and color coded by rate;
- Shaded maps for the year selected with the ability to view data geographically.

Step-by-step instructions are provided at: <http://www.fact.virginia.gov/wp-content/uploads/2015/01/Step-by-Step.pdf>. These visual instructions will explain some key features of this tool including the dropdown filters, sorting options, export options and how to maximize the utility of the map and line graph features.

Each individual indicator is accessible by clicking on a link below.

Issues have been reported when using Internet Explorer 10. If the tables do not load when using Explorer try an alternate browser. If that is not possible verify that Active Scripting, ActiveX and Java are not being blocked by Internet Explorer.

### Community Health and Well-being Indicators

[Arrests of Adults for Drug- and Alcohol-related Offenses](#)

[Arrests of Juveniles for Drug- and Alcohol-related Offenses](#)

[Percentage of the Labor Force that Is Unemployed](#)

[Percentage of the Population Living Below the Poverty Line](#)



Each indicator page follows the same basic format - title followed by indicator description. Tables and graphs are located below each indicator description. Most indicators have a line graph, data table and shaded map. A few indicators are reported by rolling year and will not be displayed with a line graph. Located below the data are the source information and any pertinent notes.

## Family Violence Indicator: CPS Founded Investigations of Abuse and Neglect of Children by Family Members

Title

Child Protective Services Founded Investigations of Abuse and Neglect of Children by Family Members

Description

This indicator reflects the number of founded investigations for children in which physical abuse, physical neglect, sexual abuse, mental abuse/neglect, or medical neglect by family members was confirmed. CPS investigations are conducted when there are immediate concerns about child safety, a prior history of child abuse and/or when the reported allegation is severe.

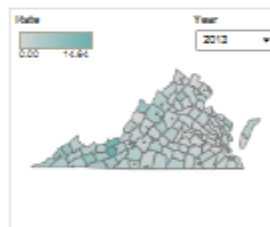
Line Graph



Data Table

| County            | 2011 | 2012 | 2013 |      |
|-------------------|------|------|------|------|
| Accomack County   | 2    | 5.50 | 3.88 | 3.25 |
| Albemarle County  | 9    | 0.61 | 1.28 | 1.48 |
| Alexandria City   | 8    | 1.04 | 1.04 | 1.04 |
| Alleghany County  | 2    | 1.62 | 1.08 | 2.88 |
| Amelia County     | 7    | 1.42 | 0.00 | 1.09 |
| Amherst County    | 9    | 4.34 | 2.38 | 1.85 |
| Appomattox County | 6    | 1.80 | 1.81 | 1.81 |
| Arlington County  | 6    | 1.43 | 1.10 | 1.09 |
| Augusta County    | 15   | 3.14 | 3.24 | 4.75 |
| Bath County       | 0    | 0.00 | 1.56 | 0.00 |

Shaded Map



Source & Notes

Source: Virginia Department of Social Services, OASIS

Notes:

This indicator counts founded investigations, not the number of children abused/neglected. Children may be counted more than once if an investigation identifies more than one type of abuse/neglect or if multiple investigations throughout the year are founded. This indicator counts substantiated reports, not persons abused. Certain local agencies serve multiple counties. For example, the same rate will be displayed for York and Poquoson as the information for these combined localities can be difficult to accurately disaggregate. A full list of combined localities can be found in the Data Guide.

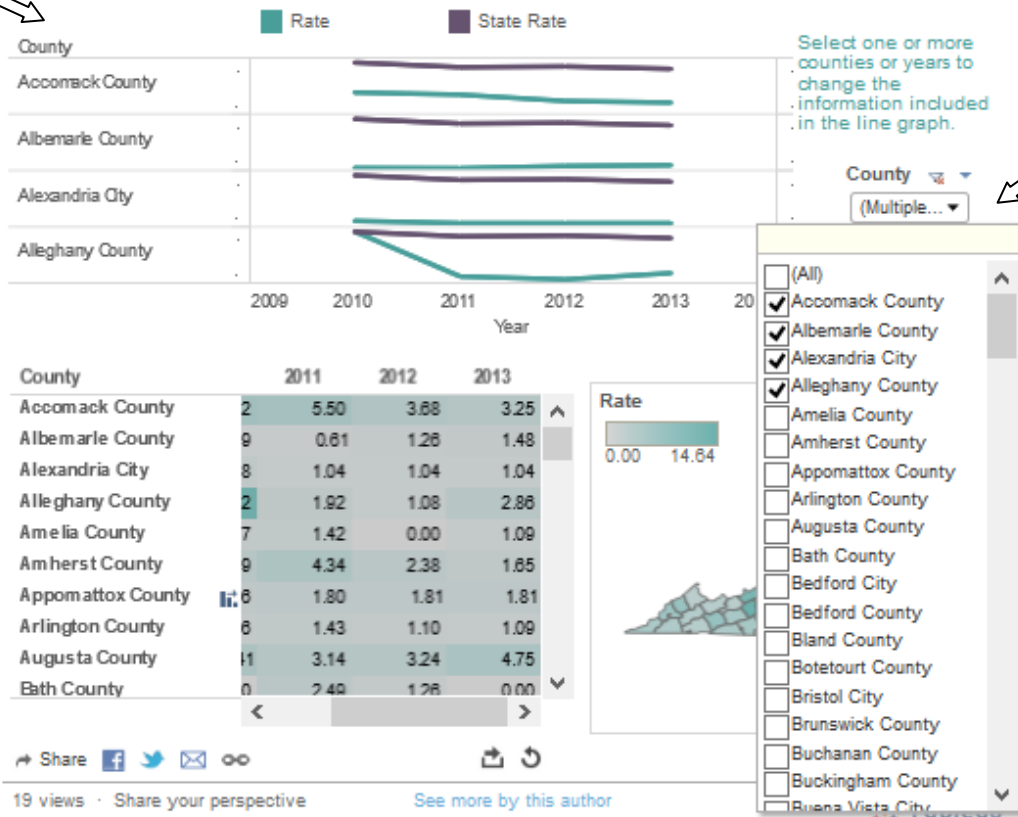
Upon validating a report of child abuse or neglect for an investigation response, a local department of social services determines whether the investigation is founded based on a preponderance of evidence showing that maltreatment has occurred. Types of child abuse and neglect for which an investigation may be founded include physical abuse, physical neglect, sexual abuse, mental abuse/neglect, and medical neglect. A large number of valid reports of child abuse and neglect receive a family assessment response rather than an investigation; assessments are not included in these data. Family assessments are the preferred response when a child is not in immediate danger and include developing plans to remedy and/or prevent risk of future abuse. Investigations are conducted when there are immediate concerns about child safety, a prior history of child abuse, and/or the reported allegation is severe. This indicator reflects the number of founded investigations for any type of child abuse/neglect, not the number of children abused/neglected; children may be counted more than once if they experience more than one type of

Each line graph has two dropdown filters on the right side. One filter is for the county and the other is for the year.

### Child Protective Services Founded Investigations of Abuse and Neglect of Children by Family Members

This indicator reflects the number of founded investigations for children in which physical abuse, physical neglect, sexual abuse, mental abuse/neglect, or medical neglect by family members was confirmed. CPS investigations are conducted when there are immediate concerns about child safety, a prior history of child abuse and/or when the reported allegation is severe.

To get out of the dropdown box feature, click anywhere on the line graph.



County dropdown box: one or more counties can be selected by checking the box to the left. This feature works best if only a few counties are selected - ideally no more than 7. This line graph also includes the state rate for comparison. If you mouse over a data point on the graph, the rate for that county in that year will be displayed.

## Child Protective Services Founded Investigations of Abuse and Neglect of Children by Family Members

This indicator reflects the number of founded investigations for children in which physical abuse, physical neglect, sexual abuse, mental abuse/neglect, or medical neglect by family members was confirmed. CPS investigations are conducted when there are immediate concerns about child safety, a prior history of child abuse and/or when the reported allegation is severe.

To get out of the dropdown box feature, click anywhere on the line graph.



Year dropdown box: one or more years can be selected by checking the box to the left. This line graph also includes the state rate for comparison. If you mouse over a data point on the graph, the rate for that county in that year will be displayed.



Share [Facebook] [Twitter] [Email] [Link] Download

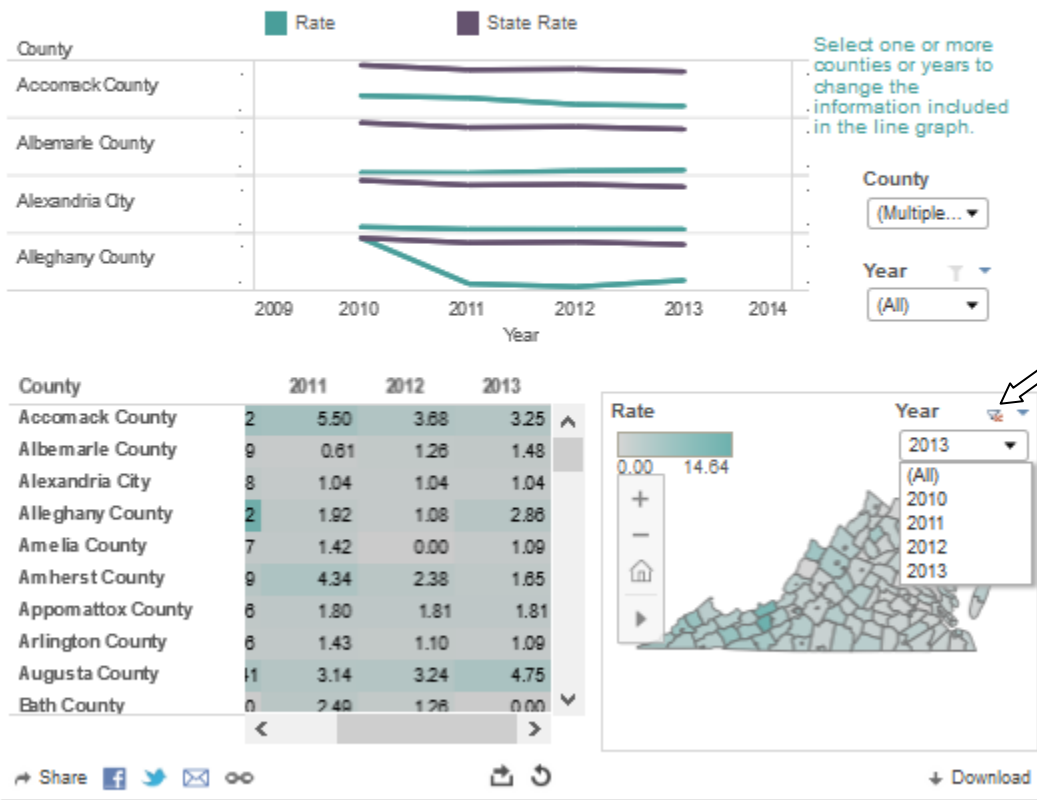
19 views · Share your perspective See more by this author

Source: Virginia Department of Social Services, OASIS

The map is most accurate when showing one year's worth of data at a time and will only allow the user to select one at a time. Changing the year will update the data and shading of the map.

### Child Protective Services Founded Investigations of Abuse and Neglect of Children by Family Members

This indicator reflects the number of founded investigations for children in which physical abuse, physical neglect, sexual abuse, mental abuse/neglect, or medical neglect by family members was confirmed. CPS investigations are conducted when there are immediate concerns about child safety, a prior history of child abuse and/or when the reported allegation is severe.



Year dropdown box: select the year to change the data displayed on the map.

Source: Virginia Department of Social Services, OASIS

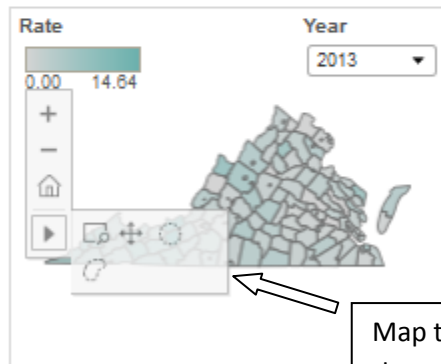
Once you have selected the year, the map can be customized in a few additional ways. Using the tools located within the map box, you can zoom or select specific counties to be highlighted.

### Child Protective Services Founded Investigations of Abuse and Neglect of Children by Family Members

This indicator reflects the number of founded investigations for children in which physical abuse, physical neglect, sexual abuse, mental abuse/neglect, or medical neglect by family members was confirmed. CPS investigations are conducted when there are immediate concerns about child safety, a prior history of child abuse and/or when the reported allegation is severe.



| County                | 2010  | 2011  | 2012  |
|-----------------------|-------|-------|-------|
| Pulaski County        | 14.28 | 13.31 | 13.51 |
| Giles County          | 9.93  | 18.47 | 15.24 |
| Smyth County          | 8.84  | 5.83  | 8.75  |
| Dickenson County      | 4.58  | 3.82  | 4.31  |
| Wise County           | 11.81 | 8.86  | 9.81  |
| Highland County       | 2.85  | 8.70  | 12.58 |
| Northumberland County | 2.40  | 5.46  | 4.48  |
| Fredericksburg City   | 6.14  | 4.38  | 5.82  |
| Rappahannock County   | 0.00  | 0.00  | 4.87  |
| Carroll County        | 4.38  | 4.38  | 3.84  |



Map tools will allow the user to zoom in or out, return to the original view, or select a group of counties to be highlighted.

Share [Facebook] [Twitter] [Email] [Print]

21 views

[See more by this author](#)

Source: Virginia Department of Social Services, OASIS

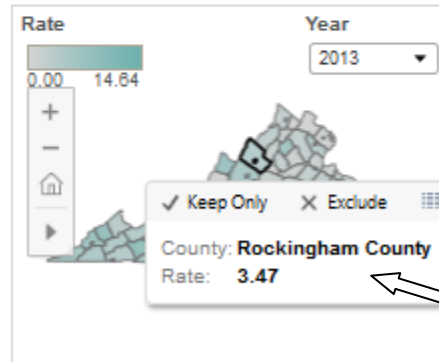
Use the mouse to highlight and display data for a specific county. By selecting “keep only” you can create a graphic display for that county alone.

### Child Protective Services Founded Investigations of Abuse and Neglect of Children by Family Members

This indicator reflects the number of founded investigations for children in which physical abuse, physical neglect, sexual abuse, mental abuse/neglect, or medical neglect by family members was confirmed. CPS investigations are conducted when there are immediate concerns about child safety, a prior history of child abuse and/or when the reported allegation is severe.



| County                | 2010  | 2011  | 2012  |
|-----------------------|-------|-------|-------|
| Pulaski County        | 14.28 | 13.31 | 13.51 |
| Giles County          | 9.93  | 18.47 | 15.24 |
| Smyth County          | 8.84  | 5.83  | 8.75  |
| Dickenson County      | 4.58  | 3.62  | 4.31  |
| Wise County           | 11.61 | 8.86  | 9.61  |
| Highland County       | 2.65  | 8.70  | 12.58 |
| Northumberland County | 2.40  | 5.46  | 4.48  |
| Fredericksburg City   | 6.14  | 4.38  | 5.82  |
| Rappahannock County   | 0.00  | 0.00  | 4.87  |
| Carroll County        | 4.38  | 4.38  | 3.64  |



Use mouse to view data for a specific county.

Share

Download

21 views

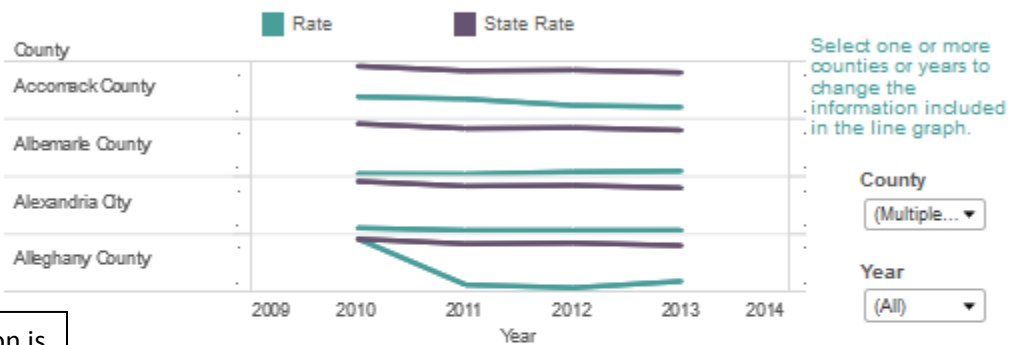
[See more by this author](#)

Source: Virginia Department of Social Services, OASIS

Data can be downloaded and shared through a variety of methods.

### Child Protective Services Founded Investigations of Abuse and Neglect of Children by Family Members

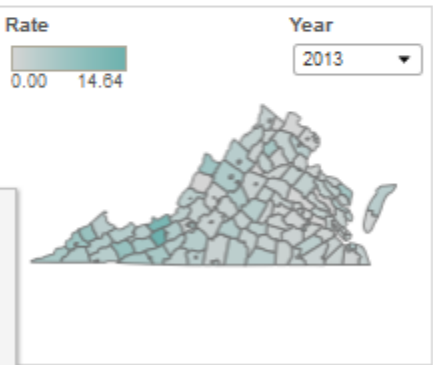
This indicator reflects the number of founded investigations for children in which physical abuse, physical neglect, sexual abuse, mental abuse/neglect, or medical neglect by family members was confirmed. CPS investigations are conducted when there are immediate concerns about child safety, a prior history of child abuse and/or when the reported allegation is severe.



The share option is simplest when sharing through social media. In addition, an email or link can be generated for a web view of the dashboard in Tableau.

| County           | 2011 | 2012  | 2013  | 2014  |
|------------------|------|-------|-------|-------|
| Accomack County  | 8    | 13.31 | 13.51 | 14.64 |
| Albemarle County | 3    | 18.47 | 15.24 | 12.50 |
| Alexandria City  | 4    | 5.83  | 8.75  | 7.95  |
| Alleghany County | 8    | 3.62  | 4.31  | 7.73  |
| ... County       | 1    | 8.96  | 9.61  | 6.99  |
| ... County       | 5    | 8.70  | 12.58 | ...   |
| ... County       | 0    | 5.46  | 4.48  | ...   |
| ... City         | 4    | 4.38  | 5.82  | ...   |
| ... County       | 0    | 0.00  | 4.87  | ...   |
| ... County       | 8    | 4.36  | 3.64  | ...   |

- Image
- Data
- Crosstab
- PDF



Share [Facebook] [Twitter] [Email] [Link]

21 views See more by this author

Source: Virginia Department of Social Services, OASIS

Download

The dashboard can be downloaded. This method is best for someone with a Tableau account.

When clicking on the download arrow, a box will appear. This allows the user to download the dashboard as an image, data, crosstab or PDF. The image or PDF options are best if trying to embed this into a presentation or document. Data or crosstab are assist in doing independent analysis in Excel.